

Feng Shui Consultation

General Information

Kyle Cline, 222-1416

Feng Shui is about the energy of place. It is one aspect of the Chinese energetic arts which explores how energy influences ourselves and our environment. There are many different styles and approaches to feng shui. My approach is an equal combination of technical information about energy flow with my internal capabilities to feel energy. Balancing the analytical with the intuitive provides a comprehensive energetic assessment.

Your consultation will analyze the energetic qualities of your particular site, whether home, business, or other place. This cover page will provide you with some basic background information to help understand my feng shui analysis of your site and the resulting suggestions.

Three Levels

I evaluate three general levels with any site: the external environment; the floor plan; and the energetic chart.

External Environment - This includes the general energetic context that your site is in. It may involve the whole neighborhood or area, and includes aspects like streets, highways, traffic level, trees, hills, neighboring structures, etc. This level evaluates how the external environment influences your site. It also looks at how the external environment of your property influences your structure.

Floor Plan - The floor plan is the physical blueprint of the structure. This includes walls, hallways, stairs, doors and how energy flows and is influenced by the placement of these elements.

Energetic Chart - This is an energetic evaluation of your site based on the facing orientation, the year the structure was built, and any major remodels since then. (A major remodel is moving/adding walls, doors, windows that significantly changes the flow of chi through a structure.)

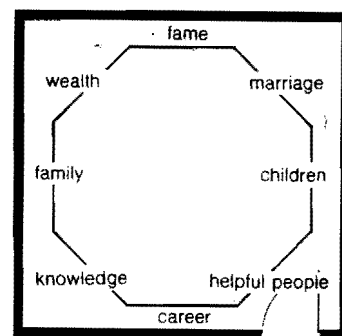


Diagram 1: Ba Gua superimposed on a room

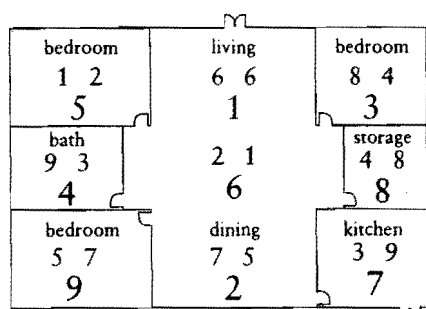


Diagram 2: 9 Palaces superimposed on a floorplan

There are several different ways this energetic chart may be drawn. Some people familiar with feng shui have seen the Ba Gua chart (diagram 1), the eight sided shape that is superimposed on a room. I utilize a variation of the Ba Gua called the Nine Palaces (diagram 2). Both systems are connected to the energetic concepts of the classic Chinese source, the I Ching. The Nine Palaces, in addition to the eight aspects of the Ba Gua, includes the center, to form nine aspects. The Nine Palaces also adds the dimension of time as a changing variable (thus, the need for the building and remodeling dates). Overall, the Nine Palaces provides much more detail and a custom analysis of your site.

Overall, the Nine Palaces provides much more detail and a custom analysis of your site.

In the process of explaining your site in energetic terms, it may be helpful for you to know some general terminology.

Five Elements

This is a basic concept which is used throughout Chinese energetic arts. In general terms it describes how energy is produced and kept from becoming excessive. In general, the Five Element concept identifies

the energetic relationships between each element. The major relationships are called **Nourishing** and **Controlling**.

The **Nourishing** cycle of the Five Elements states that:

Earth nourishes Metal, which nourishes Water, which nourishes Wood, which nourishes Fire, which nourishes Earth.

The **Controlling** cycle of the Five Elements states that:

Earth controls Water, which controls Fire, which controls Metal, which controls Wood, which controls Earth.

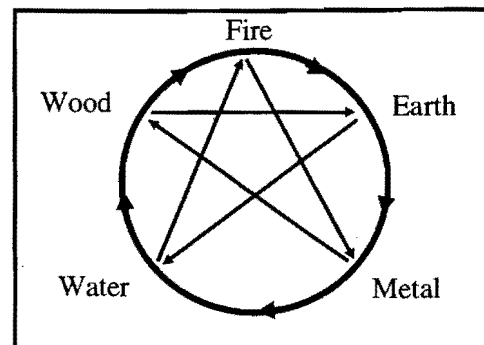


Diagram 3: Five Element Nourish & Control Cycles

These cycles are represented by diagram 3.

In the course of the feng shui consultation, we will use these basic energetic relationships to evaluate and create solutions to your site's energetic flow.

The Nine Palaces take the basic idea of the Five Elements and expands it to include various levels and strengths of each element. The associations to the Nine Palace numbers are listed in this table:

#	Trigram	Compass	Element	Strength
1	Kan (water)	N	Water	weak
2	Kun (earth)	SW	Earth	moderate strong
3	Chen (thunder)	E	Wood	moderate strong
4	Sun (wind)	SE	Wood	moderate
5	Center		Earth	strong
6	Chien (heaven)	NW	Metal	weak
7	Tui (lake)	W	Metal	moderate
8	Ken (mountain)	NE	Earth	weak
9	Li (fire)	S	Fire	strong

We can also look at each of the Nine Palaces on a spectrum starting at yin and ending with yang. This is represented by diagram 4.

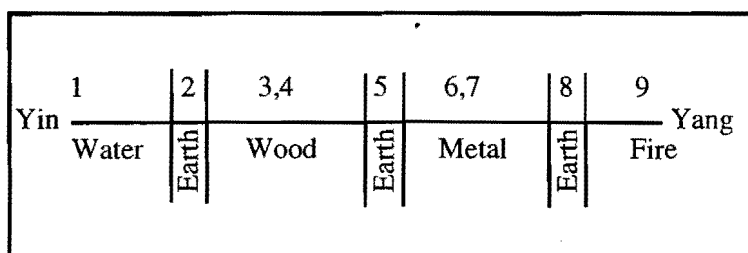


Diagram 4: 9 Palaces from yin to yang

These are the basic concepts I use in evaluating and making suggestions for your site. The suggestions are meant to decrease the negative energetic aspects and maximize the positive aspects of your site. Suggestions will be made for all three levels: external, floor plan, and energetic chart.

In general, energetic solutions may be composed of the following basic elements:

Bright or Light Reflecting objects - mirrors, crystals, glass. Can deflect, bounce negative chi. May disperse stagnant chi. Add chi to weak areas.

Sounds - wind chimes, bells. Moderate chi flow, temper extremes, redirect misalignment

Living Objects - plants, flowers, fish bowls, aquariums. Add chi, balance and conduct chi through spaces.

Moving Objects - fountains, windmills, mobiles, clocks. Stimulate circulation, redirect chi.

Heavy Objects - statues, stones, sculpture. Stabilize unsettled areas.

Electrical Objects - machines. Stimulate chi of area. maximize positive aspects

Colors - Each color may represent various types of chi. May be used to enhance, balance area aspects.

Specific suggestions to influence the Nine Palace chart are composed of each of the Five Elements: earth, metal, water, wood, and fire. For example, if one area of your site has an excess of fire energy, the suggestion may be to bring the water aspect into that area (because water controls fire in the controlling cycle).

There is a range of strength for each of the Five Elements used as a solution. And the choice of how strong the solution needs to be depends on the strength of the energetic imbalance.

In general, actual moving aspects of the element are strongest. Water circulation through a fountain is stronger than still water in a bowl. The following list details the strengths of each element:

Water

Strongest: moving water; aquariums, fountains, ponds

Strong: still water; bowls, bird baths, ponds

Medium: photographs or paintings of water; oceans, rivers, lakes

Weaker: color blue

Wood

Strongest: live, growing plants; bigger & larger trunk = stronger

Strong: moving wood; mobiles, wind chimes

Medium: things made of wood; furniture, sculpture

Weaker: photographs or paintings of wood; forests, treescapes

Weakest: color green

Fire

Strongest: actual fire; candles, lamps, fireplaces; electric lights

Strong: photographs and paintings of fire; sun, red deserts, lights

Medium: color red

Earth

Strongest: actual earth; clay pottery, sculpture

Strong: photographs and paintings of the earth; mountains, globe

Medium: color yellow

Metal

Strongest: moving metal; mobiles, clocks (esp. with pendulums), metal sculpture or machinery

Strong: actual metal; sculpture, artworks, picture frames, furniture

Medium: photographs and paintings of metal; trains, rockets, ships

Weakest: color white

With this background information, we can then interpret your site and design solutions that will improve its energetic characteristics.

References for more information

Basic Information

Rossbach, Sarah; *Interior Design with Feng Shui*

Advanced Information

Wong, Eva; *Feng Shui: The Ancient Wisdom of Harmonious Living for Modern Times*

Consultation Notes
